

COVID, Cancer Care, and Cancer Research

*National Coalition for Cancer Survivorship
Cancer Policy Roundtable*

Norman E. Sharpless, M.D.
April 22, 2021

@NCIDirector
@TheNCI

Today

- 50th Anniversary of the National Cancer Act
- Cancer Moonshot
- NCI Appropriations & Paylines
- COVID-19 Impacts and Activities
- NCI Activities in Cancer Survivorship
- Equity and Inclusion



“The President and I stand with you. This is the fight of our lives, and we will never stop working to end this disease. And together, I know that we're going to go farther than ever before.”

Dr. Jill Biden
Virtual Visit to NCI
February 3, 2021

I'd love to be the President to preside over the end of cancer as we know it. These are the folks in the House and Senate who would love to preside over cancer —the end of cancer as we know it.

President Joe Biden
Bipartisan Meeting on
Cancer, Oval Office
March 3, 2021

**What would it mean to end
cancer as we know it?**

What would it take?

National Cancer Act of 1971 50th Anniversary



Cancer Act



Cancer MoonshotSM



PROGRESS

OVER
70
CONSORTIUMS
OR PROGRAMS

OVER
240
RESEARCH
PROJECTS

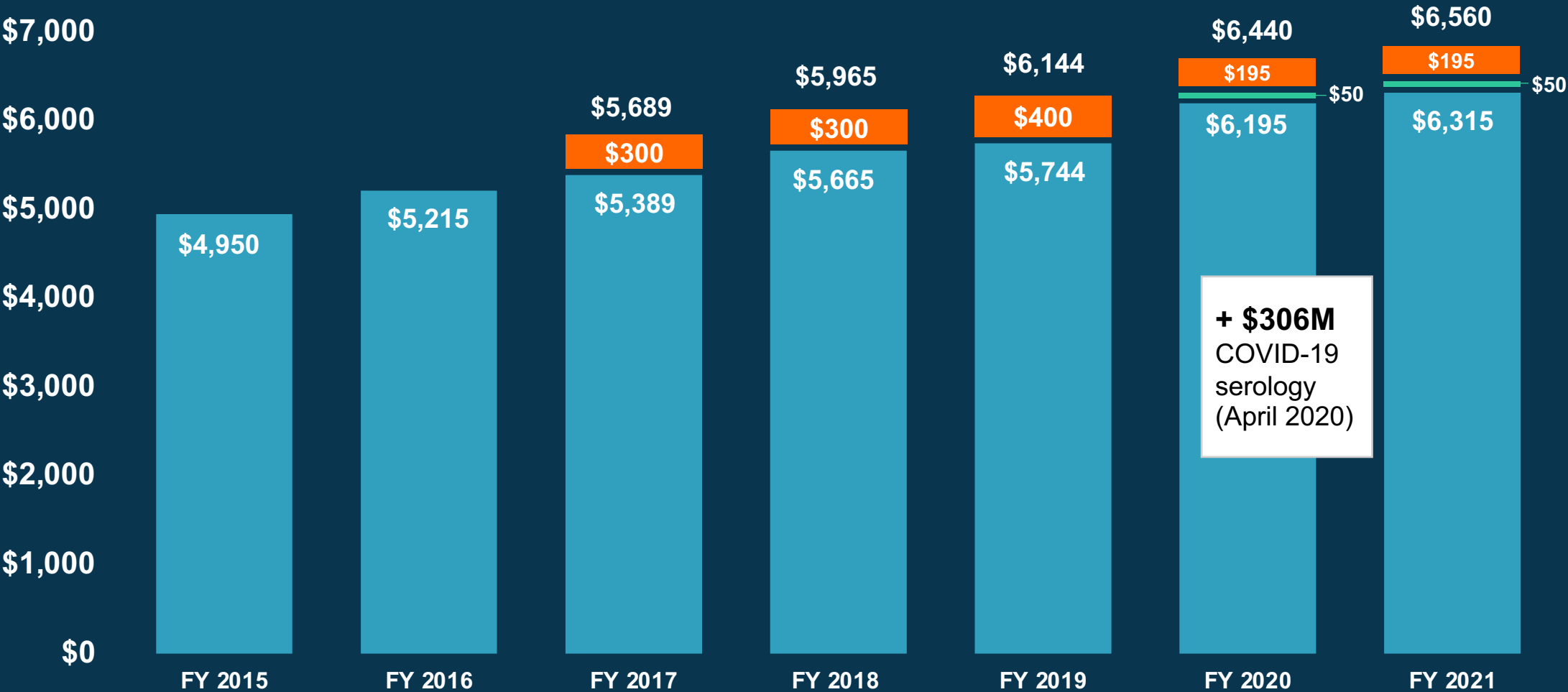
National Cancer Institute

Select Cancer Moonshot efforts in survivorship

Initiative	Grants / Projects	Principal Investigator
Improving the Management of symPtoms during and following Cancer Treatment (IMPACT)	A Randomized Trial of a Mobile Health and Social Media Physical Activity Intervention Among Adolescent and Young Adult Childhood Cancer Survivors	Nina S. Kadan-Lottick, Jason A. Mendoza
Improving Outcomes for Pediatric, Adolescent and Young Adult (AYA) Cancer Survivors	Self-Management to Optimize Survivorship Care and Outcomes in Lung and Colorectal Cancer	Virginia Chih-Yi Sun
Optimizing the Management and Outcomes for Cancer Survivors Transitioning to Follow-up Care	The EPICS (Engaging Primary Care In Cancer Survivorship) Study: A Randomized Trial of Novel Models of Care for Cancer Survivors	Erin Elizabeth Hahn
	Optimizing Functional Outcomes of Older Survivors After Chemotherapy	Supriya G. Mohile, Michelle C. Janelains, Karen M. Mustian

NCI Appropriations FY 2015 – 2021 (in millions)

21st Century Cures Act - orange
Childhood Cancer Initiative - green



+ \$306M
COVID-19
serology
(April 2020)

NCI Paylines for FY 2021

GRANT TYPE	PAYLINE
R01 Grants for Established and New Investigators	11th Percentile
R01 Grants for Early-Stage Investigators (ESIs)	16th Percentile
R21 Exploratory Grants	9th Percentile
Non-competing grants will be funded at 100%.	

**15 by 25
goal**

15th
percentile
R01 payline
by 2025

NCI COVID-19 activities

FOUNDATIONAL SEROLOGY

Serological Sciences Network (SeroNet)

- 8 Centers of Excellence
- 13 Research Projects
- 4 Capacity Building Centers
- FNL Serology Lab & Network Coordinating Center

CLINICAL & TRANSLATIONAL SEROLOGY

Sero-protection Studies:

- Mount Sinai, University of Arizona
- NIH All of Us
- NCI SEER + Health Verity

COVID-19 Seroprevalence Studies Hub (SeroHub)

Antibody test performance
evaluation, with FDA

Standard reference serum

Clinical trials for COVID-19
therapeutics

- Tocilizumab
- CD24Fc

SUPPORT FOR CANCER RESEARCH AND CARE AMID THE PANDEMIC

NCI COVID-19 in Cancer
Patients Study (NCCAPS)

Flexibilities for grantees

Clinical trials adaptations

Modeling to predict long-term
cancer outcomes

ADDITIONAL COVID-19 RESEARCH

- Excess Mortality Study
- Digital Health Solutions (with NIBIB)
- ACTIV (trans-NIH)

NCI COVID-19 in Cancer Patients Study (NCCAPS)

900+

TRIAL SITES
ACTIVATED
IN

50

STATES
+ DC, PUERTO
RICO, AND
CANADA

Special emphasis on
minority,
underserved and
rural communities

Enrolled
patients will
be followed
for 2 years

1051

PATIENTS
ENROLLED

Now open to pediatric
patients

Launched May 21
Conception to Launch in
6 weeks

Aims to enroll
2,000 patients
across 1,000
sites in U.S.

COVID-19 & Cancer

How the COVID-19 Pandemic Has Changed Cancer Care, In 4 Charts

Percentage change in cancer screenings during COVID-19

The lines show how the volume of cancer screenings this year compares to the weekly average in the three years prior to the pandemic.



Newly identified cancer patients

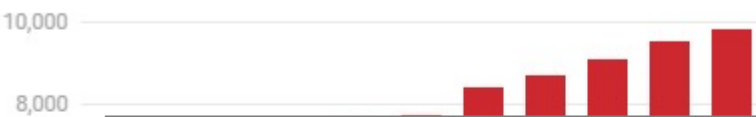
Cancer testing data from Quest Diagnostics shows drops in new diagnoses during the 19 lockdown period. Use the pulldown to see the trends for the six cancer types.



Baseline is a 60-week average prior to March 1. Subsequent tallies are for the week starting on the date. Chart: Emily Barone for TIME • Source: JAMA; Quest Diagnostics • Get the data • Created with Datawrapper

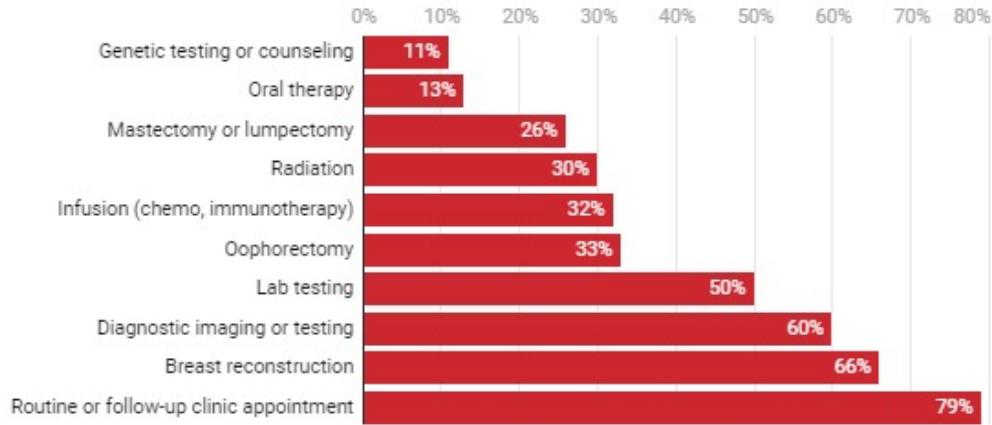
Cumulative excess deaths due to COVID-19

A moderate disruption in care for six months due to the pandemic may add nearly 10,000 deaths from two cancer types this decade.



Breast cancer patients with pandemic-related delays in care

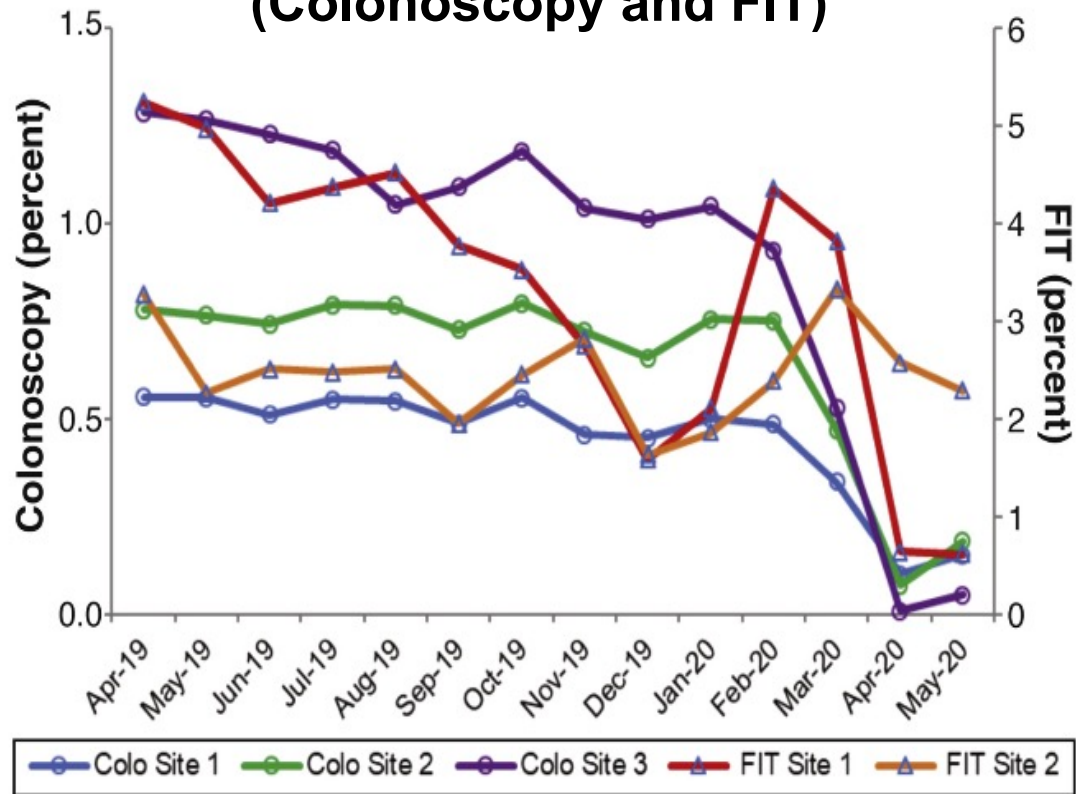
The below data shows reported delays from a survey of 607 U.S. breast cancer patients and survivors, 63% of which were currently receiving cancer treatment.



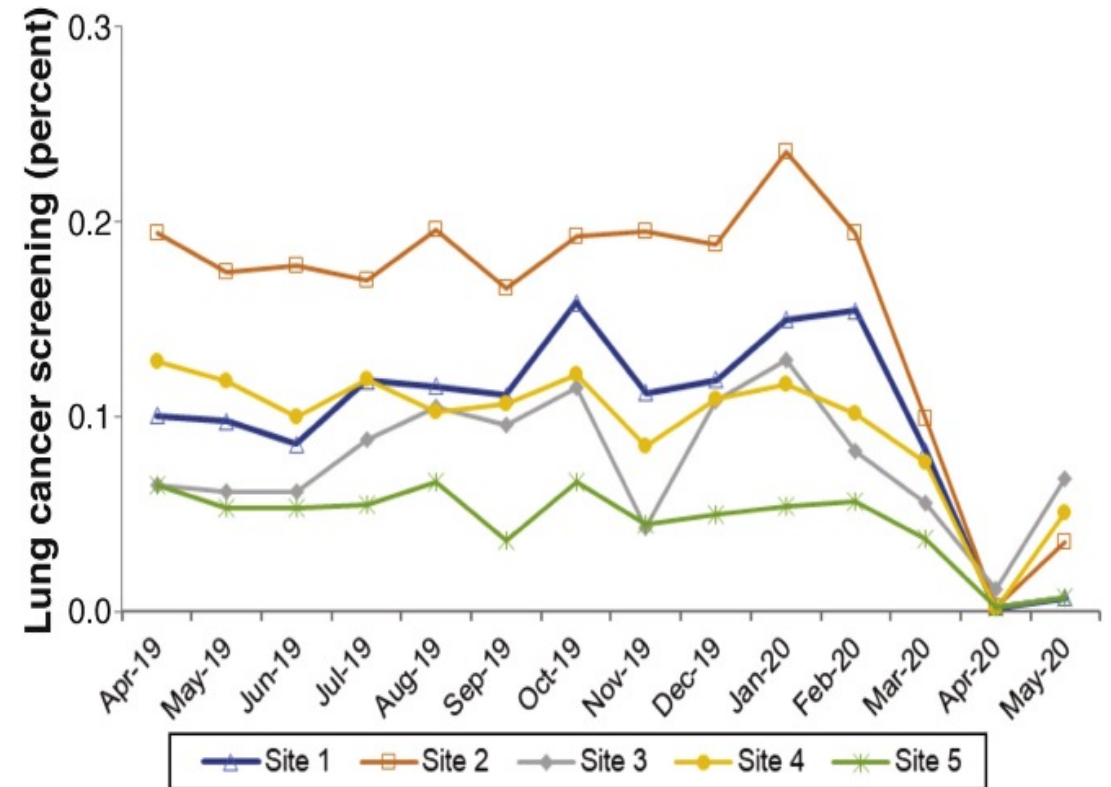
Survey was conducted from April 2 to April 27. In addition to the above categories, 73% chose "Other." Chart: Emily Barone for TIME • Source: Springer • Get the data • Created with Datawrapper

Impact of COVID-19 Pandemic on Cancer Screening in the US

Colorectal Cancer Screening (Colonoscopy and FIT)

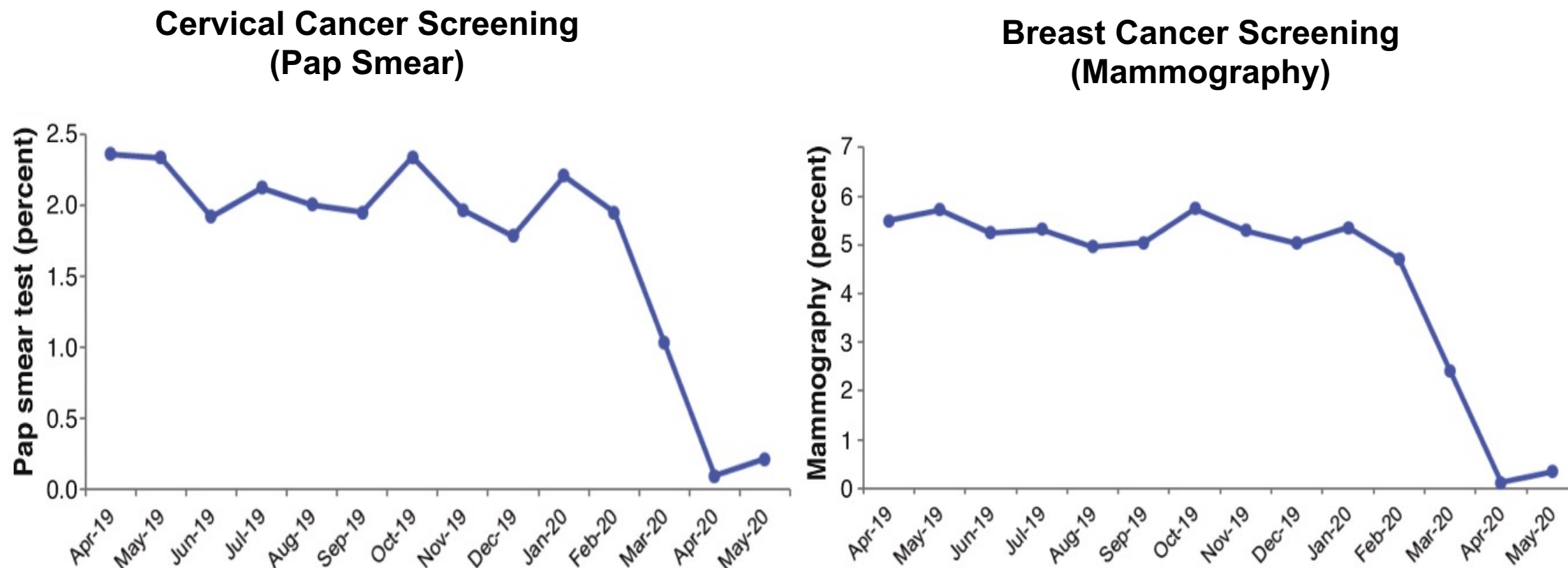


Lung Cancer Screening (LDCT)



Cancer Screening During the Coronavirus Disease-2019 Pandemic: A Perspective From the National Cancer Institute's PROSPR Consortium. Gastroenterology, Volume 160, Issue 4, 999 - 1002

Impact of COVID-19 Pandemic on Cancer Screening in the US



Cancer Screening During the Coronavirus Disease-2019 Pandemic: A Perspective From the National Cancer Institute's PROSPR Consortium. Gastroenterology, Volume 160, Issue 4, 999 - 1002

Centers on Telehealth Research for Cancer-Related Care – Goals:

RFA
CA-21-029

Leverage the P50 mechanism to:

1. Create national centers for advancing cancer-related telehealth research in a rapidly changing environment
2. Establish a robust evidence base for patient-centered, sustainable telehealth models of cancer care delivery
3. Foster the development, evaluation, and dissemination of evidence-based models of cancer-focused telehealth



Emily S. Tonorezos, MD, MPH
Director
Office of Cancer Survivorship
Division of Cancer Control and
Population Sciences

STAR Act Implementation

New survivorship research opportunities	New biobanking projects	Identifying best practices in survivorship care
<ul style="list-style-type: none">• Improving Outcomes for Pediatric, Adolescent and Young Adult Cancer Survivors: 7 U01 awards• Research to Reduce Morbidity and Improve Care for Pediatric, and Adolescent and Young Adult (AYA) Cancer Survivors	<ul style="list-style-type: none">• Several Children's Oncology Group projects, including the Rare Tumor Populations Biobank• Projects in collaboration with the Childhood Cancer Survivor Study• Specimen collection efforts in collaboration with the Childhood Cancer Data Initiative	<ul style="list-style-type: none">• Partnership with the Agency for Healthcare Research and Quality (AHRQ)• 1st of 3 evidence reviews published in March 2021 focused on Disparities and Barriers to Pediatric Cancer Survivorship Care• 2 reviews in progress, to be published later this year, focusing on models of care and transitions in care

NIH's Commitment to Ending Structural Racism

- NIH is committed to instituting new ways to support diversity, equity, and inclusion, and identifying and dismantling any policies and practices that may harm our workforce and our science.
- NIH established the **UNITE** initiative to address structural racism in biomedical research with the goal of ending racial inequity.
- Primary goals of the initiative are:
 - U** Understanding stakeholder experiences through listening and learning
 - N** New research on health disparities, minority health, and health equities
 - I** Improving the NIH culture and structure for equity, inclusion and excellence
 - T** Transparency, communication, and accountability with our internal and external stakeholders
 - E** Extramural research ecosystem: changing policy, culture and structure to promote workforce diversity

nih.gov/ending-structural-racism



National Institutes of Health
Turning Discovery Into Health

NCI Equity and Inclusion Program

EQUITY COUNCIL	Chair Ned Sharpless Vice Chair Paulette Gray	Mark Alexander Andrea Apolo Nelvis Castro Bob Croyle	Montse Garcia-Closas Anne Lubenow Ji Luo	Donna Siegle Dinah Singer Sanya Springfield
WORKING GROUP 1 <i>Enhancing Research to Address Cancer Health Disparities</i> CO-CHAIRS Jim Doroshow Worta McCaskill-Stevens Tiffany Wallace	WORKING GROUP 2 <i>Ensuring Diversity of Thought and Background in the Cancer Research Workforce</i> CO-CHAIRS LeeAnn Bailey Susan McCarthy Glenn Merlino	WORKING GROUP 3 <i>Promoting an Inclusive and Equitable Community at NCI</i> CO-CHAIRS Shannon Bell Paige Green Satish Gopal	WORKING GROUP 4 <i>Systematic Tracking and Evaluation of Equity Activities</i> CO-CHAIRS Michelle Bennett Doug Lowy	WORKING GROUP 5 <i>Communications and Outreach for Equity Activities</i> CO-CHAIRS Peter Garrett Angela Jones Anita Linde

Discussion